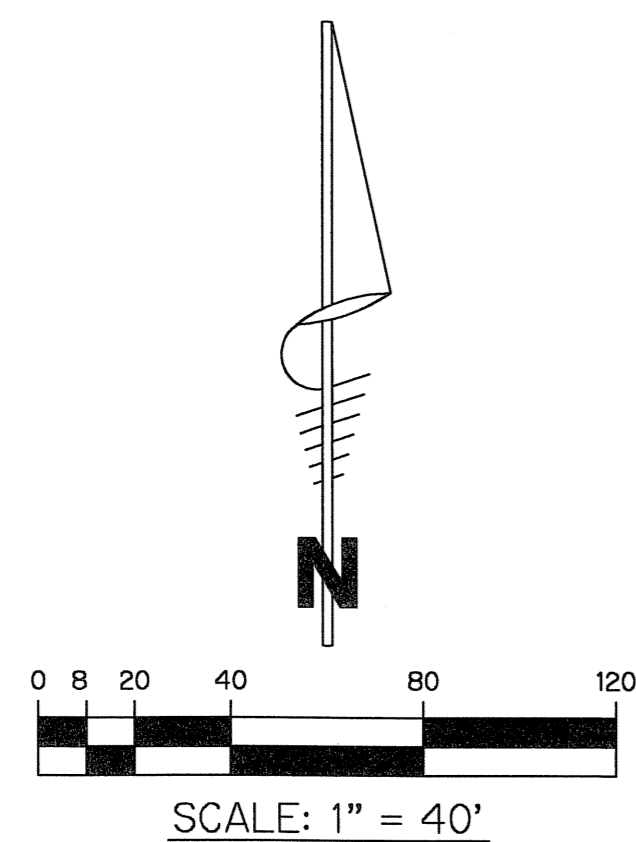


NAUTICA LAKES P.U.D. - PLAT TWO

A PARCEL OF LAND IN SECTION 36, TOWNSHIP 43 SOUTH, RANGE 41 EAST,
VILLAGE OF ROYAL PALM BEACH, PALM BEACH COUNTY, FLORIDA
BEING A REPLAT OF TRACTS "D1", "D2" AND "OS3" OF NAUTICA LAKES P.U.D. - PLAT ONE,
AS RECORDED IN PLAT BOOK 104, PAGES 19 - 25, OF THE PUBLIC RECORDS OF
PALM BEACH COUNTY, FLORIDA.

SHEET 4 OF 4 FEBRUARY, 2005

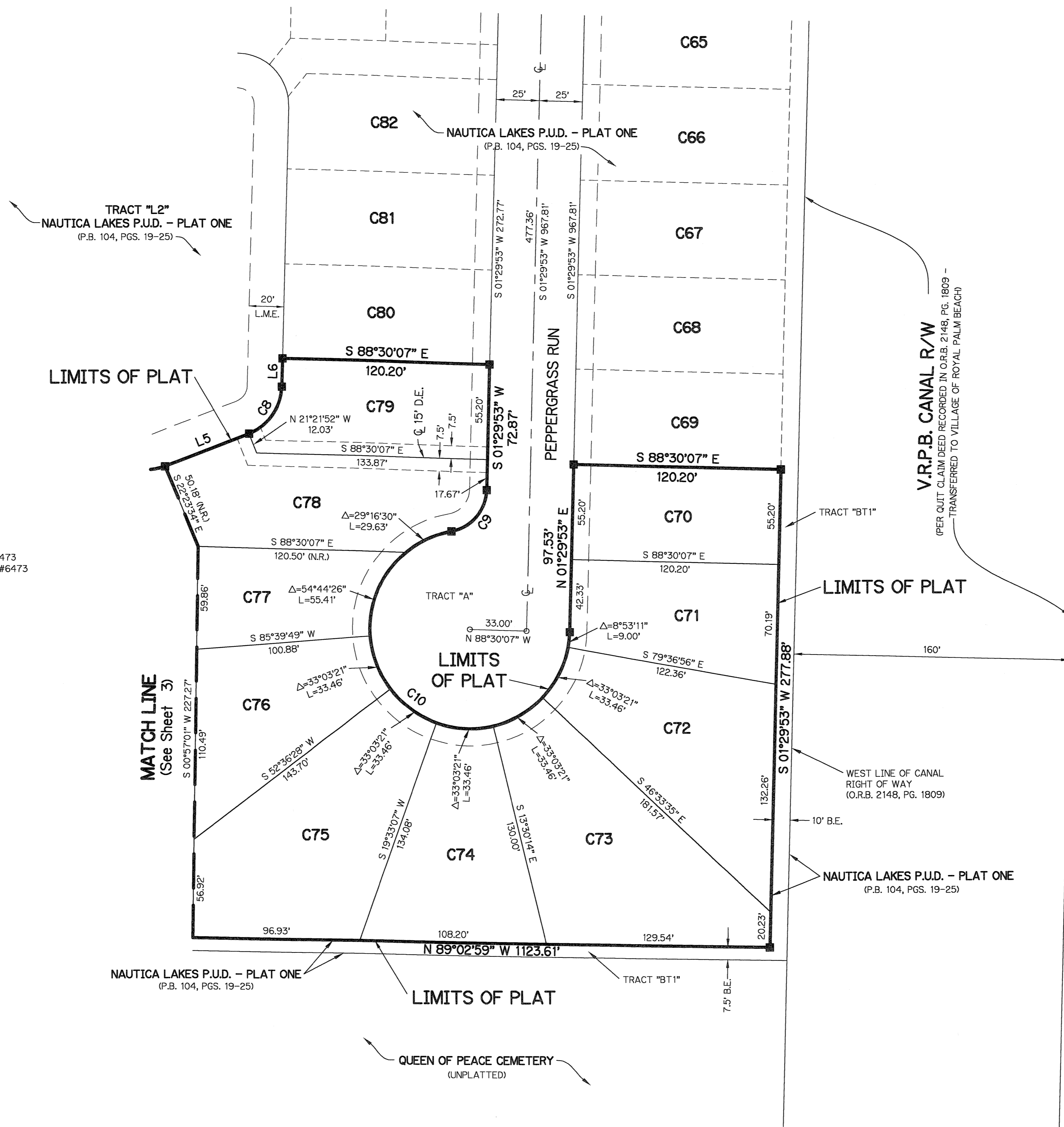
188



BROWN & PHILLIPS, INC.
CERTIFICATE OF AUTHORIZATION # LB 6473
901 NORTHPOINT PARKWAY, SUITE 305
WEST PALM BEACH, FLORIDA 33407
561-615-3988, 561-615-3986 FAX

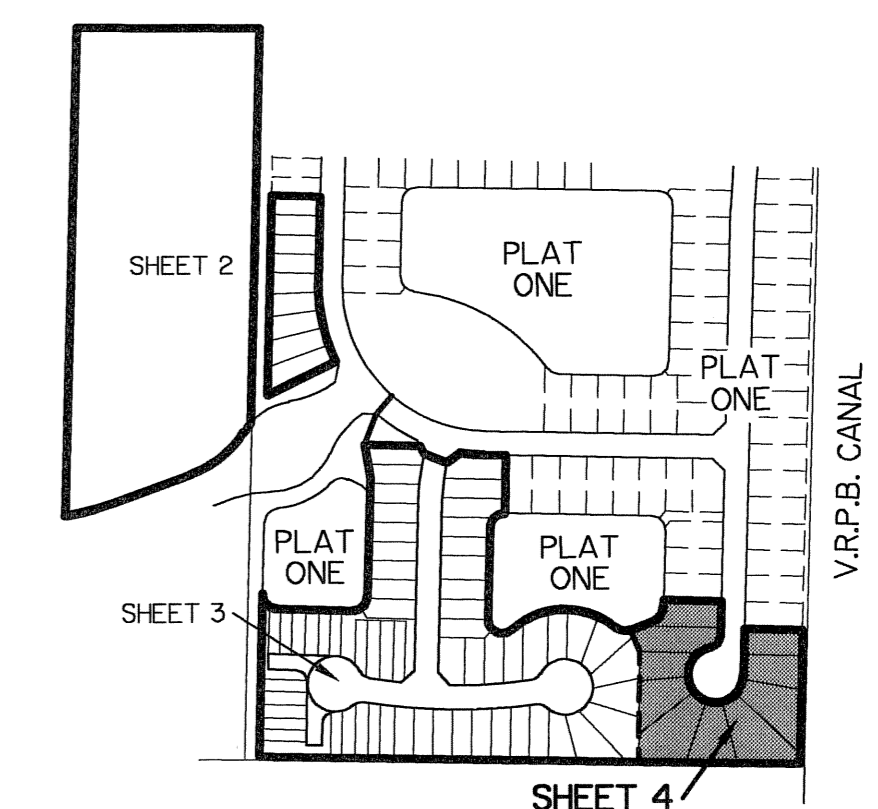
LEGEND:

- - SET PERMANENT REFERENCE MONUMENT, L.B. #6473
- - FOUND PERMANENT REFERENCE MONUMENT, L.B. #6473
- - SET PERMANENT CONTROL POINT, L.B. #6473
- - FOUND PERMANENT CONTROL POINT, L.B. #6473
- △ - CENTRAL ANGLE
- B.E. - BUFFER EASEMENT
- CB - CHORD BEARING
- CH - CHORD DISTANCE
- CL - CENTERLINE
- D.B. - DEED BOOK
- D.E. - DRAINAGE EASEMENT
- L - ARC LENGTH
- L.A.E. - LIMITED ACCESS EASEMENT
- L.M.A.E. - LAKE MAINTENANCE ACCESS EASEMENT
- L.M.E. - LAKE MAINTENANCE EASEMENT
- V.R.P.B. - VILLAGE OF ROYAL PALM BEACH
- N.R. - NOT RADIAL
- N.T.S. - NOT TO SCALE
- O.R.B. - OFFICIAL RECORD BOOK
- O.E. - OVERHANG EASEMENT
- P.B. - PLAT BOOK
- P.C.P. - PERMANENT CONTROL POINT
- PGS. - PAGES
- P.O.B. - POINT OF BEGINNING
- P.O.C. - POINT OF COMMENCEMENT
- P.S.M. - PROFESSIONAL SURVEYOR AND MAPPER
- R - RADIUS
- R/W - RIGHT-OF-WAY
- U.E. - UTILITY EASEMENT



CURVE TABLE			
CURVE	RADIUS	DELTA	LENGTH
C8	30.00'	67°08'15"	35.15'
C9	25.00'	78°10'52"	34.11'
C10	58.00'	258°10'52"	261.35'

LINE TABLE		
LINE	BEARING	LENGTH
L5	N68°38'08"E	52.53'
L6	N01°29'53"E	16.47'



KEY MAP
N.T.S.